

## LED Indicating Lamp Series 8010

STAHL



- > Indicating lamp with white LED
  - High luminance
  - Low heat build-up
  - Very long life
  - Maintenance-free
- > Ex e and Ex i versions
- > Calotte insert caps in the colours red, yellow, green, blue, clear

E4



02725E00

The indicating lamps of Series 8010 display the current state of a command by either switching on or switching off a light signal. In combination with a switchgear device, they indicate the switching state. The indicating lamp contains a white LED. The light signal is displayed via the transparent lamp insert cover equipped with a diffuser lens. This makes it easy to detect a light signal even in poor light conditions. The signal colours red, yellow, green, blue and white are produced by coloured calotte insert caps via colour filtering.






Zone	ATEX / IECEx						Class I (NEC 505)			(NEC 506)			Division	Class I		Class II		Class III	
	0	1	2	20	21	22	0	1	2	20	21	22		1	2	1	2	1	2
Ex e version: For use in		x	x		x	x		x	x				Ex e version: For use in		x				
Ex i version: For use in		x	x		x	x	x	x	x				Ex i version: For use in	x	x				

WebCode 8010A

# LED Indicating Lamp

## Series 8010

Selection Table

Version	Description	Circuit diagram	Colour	Order number	Weight kg
 <p>01393E00 LED indicating lamp 8010/2 Ex e</p>	Rated voltage: 12 ... 254 V AC / DC Voltage toleranz: - 10 ... + 6%	 <p>08001E00</p>	white	<b>8010/2-01-ws</b>	0.035
 <p>01825E00 LED indicating lamp 8010/3 Ex i</p>	Voltage: 10.8 ... 30 V AC / DC Safety maximum values (Ex i): $U_i \leq 30 \text{ V}$ $I_i \leq 150 \text{ mA}$ $P_i = 1 \text{ W}$	 <p>08001E00</p>	white	<b>8010/3-02-ws</b>	0.034
 <p>01394E00 Lenses 8602A</p>			red	<b>8602A0054-1-rt</b>	0.024
			yellow	<b>8602A0054-1-ge</b>	0.024
			green	<b>8602A0054-1-gn</b>	0.024
			blue	<b>8602A0054-1-bl</b>	0.024
			white	<b>8602A0054-1-ws</b>	0.024

### Explosion Protection

#### Marking

IECEX

Ex d e IIC  
Ex d ia/ib IIC  
Ex d e I  
Ex d ia/ib I

Europe (ATEX)

Ex II 2 G Ex d e IIC  
Ex II 2 G Ex d ia/ib IIC  
Ex I M 2 Ex d e I  
Ex I M 2 Ex d ia/ib I

#### Certificates

IECEX

Europe (ATEX)

Other certificates

IECEX PTB 06.0016 U

PTB 01 ATEX 1160 U

India (PESO), Canada (CSA), USA (UL), Belarus (Gospromnadzor)

### Technical Data

#### Electrical data

Rated operational voltage

Ex e: 12 (- 10 %) ... 254 (+ 6 %) V AC / DC  
Ex i: 10.8 ... 30 V

Safety-specific maximum values (Ex i)

$U_i \leq 30 \text{ V}$ ,  $I_i \leq 150 \text{ mA}$ ,  $P_i \leq 1 \text{ W}$ , inductance  $L_i$  and capacity  $C_i$  negligible

Frequency range

0 ... 60 Hz

Rated operational current

max. 15 mA

Rated operational power

max. 1 W

Electrical life

$10^5$  lighting hours

#### Luminous characteristics

Lamps

white LED

Colour

red, yellow, green, blue, white; via coloured lenses  
(not included in delivery)

#### Ambient conditions

Ambient temperature

- 20 ... + 55 °C  
further on request

#### Mechanical data

Enclosure material

Polyamide

Terminals

2.5 mm<sup>2</sup>, flexible

#### Lens

Version

Ø 38 mm, colour: red, yellow, green, blue and clear

Mechanical data

Degree of protection

IP66

Material

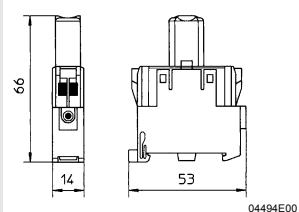
Polyamide

## LED Indicating Lamp

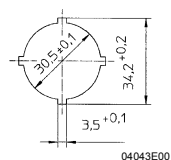
### Series 8010



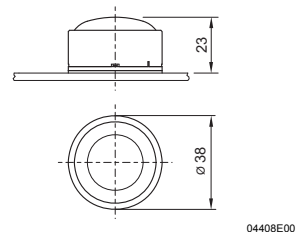
#### Dimensional Drawings (All Dimensions in mm) - Subject to Alterations



**8010/2 and 8010/3  
LED indicating lamp**



**Cut-out details**



**Lenses for 8602A**

We reserve the right to make alterations to the technical data, weights, dimensions, designs and products available without notice. The illustrations cannot be considered binding.